



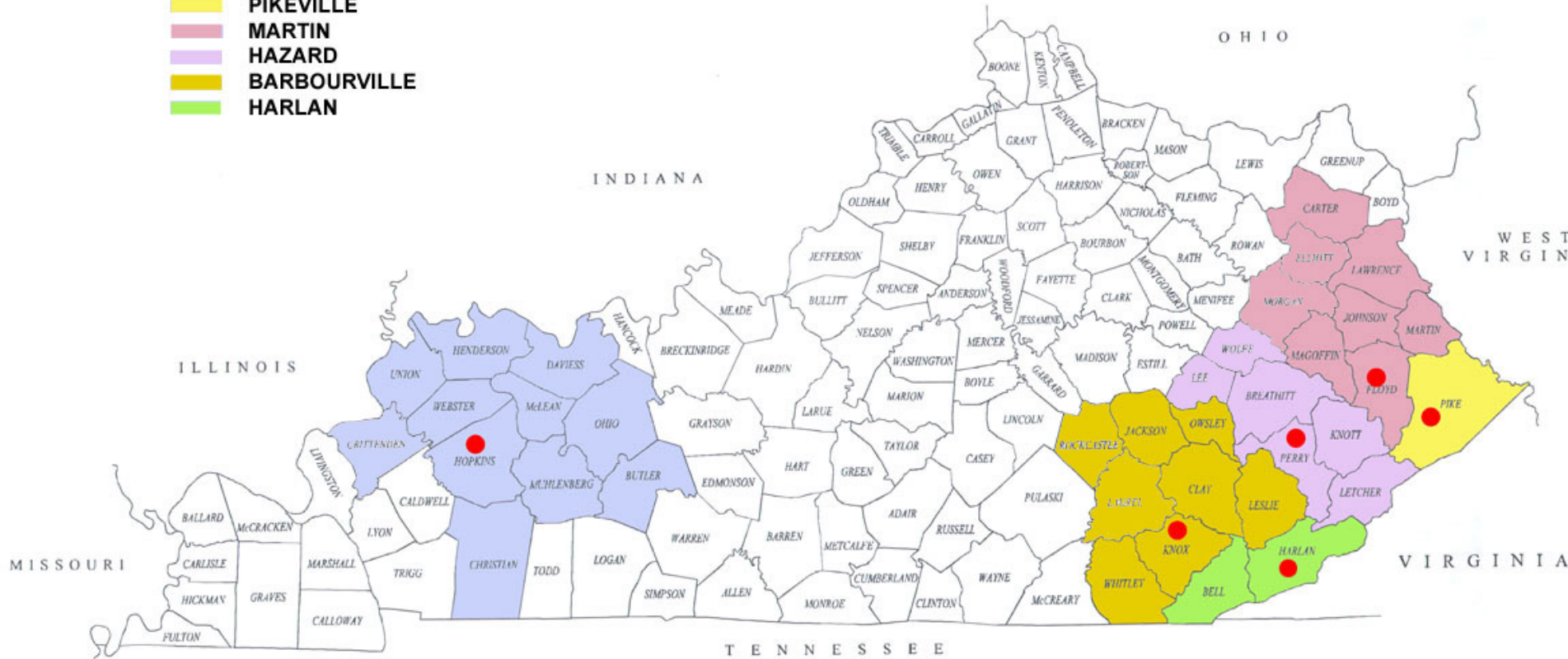
Daddy's Home ©

by
Wayne Collett

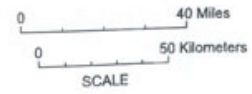
Office of Mine Safety & Licensing

- Established in 1883 and began operation in 1884
- 6 district offices in the state with executive director's office and staff in Frankfort
- OMSL has 174 employee positions
- There are 2 division Director's that work in the Frankfort office
 - 1) Director of Safety Inspection & Licensing division
 - 2) Director of Safety Analysis Training & Certification division
- Accident investigators assigned to Directors office
- Maintains a Mine Rescue Stations (2 teams) in each of OMSL district offices. OMSL has 12 mine rescue teams total.

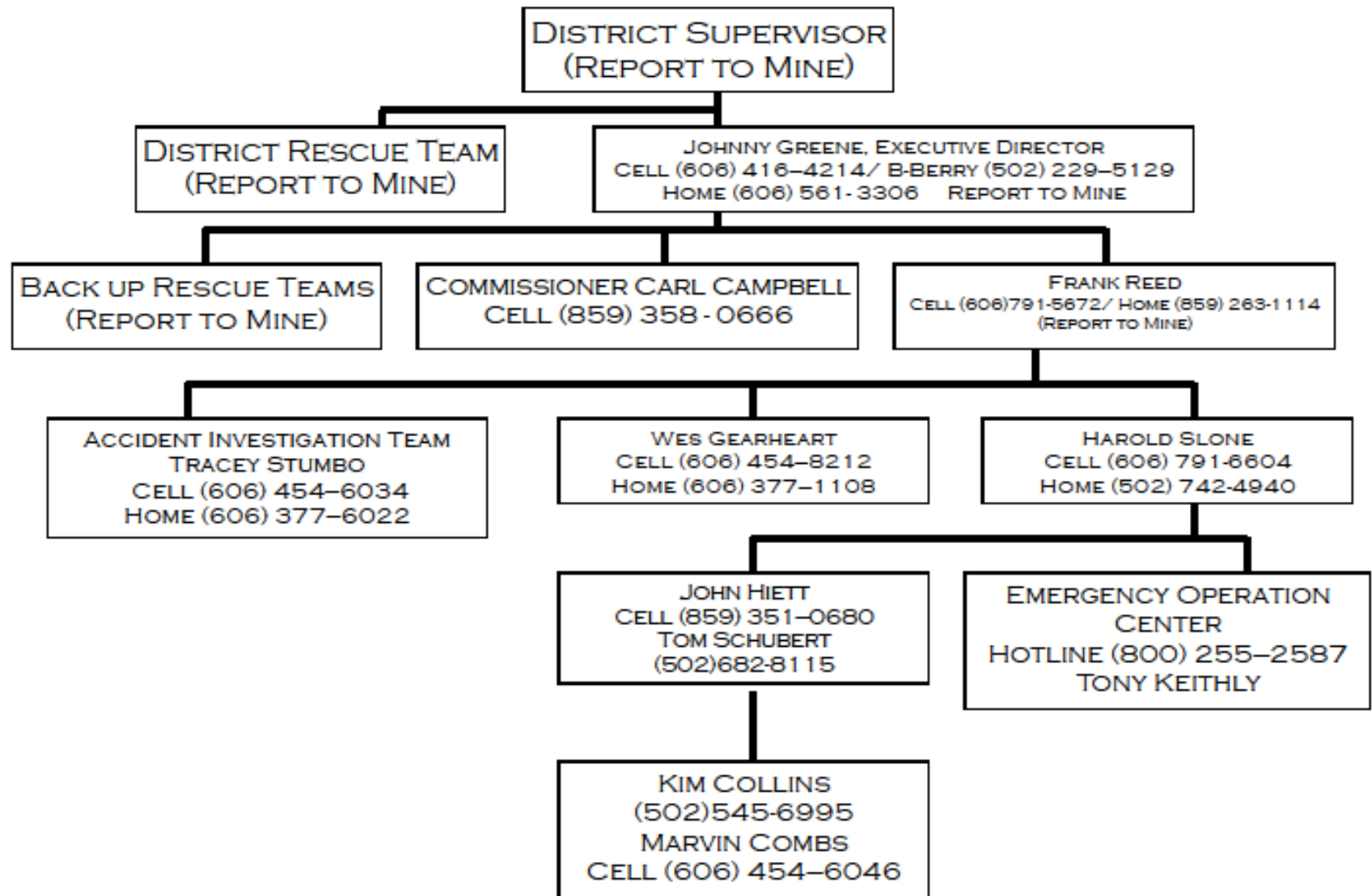
- MADISONVILLE
- PIKEVILLE
- MARTIN
- HAZARD
- BARBOURVILLE
- HARLAN



OFFICE OF MINE SAFETY & LICENSING



EMERGENCY ACTION PLAN



**OFFICE OF MINE SAFETY & LICENSING
(FRANKFORT)
PERSONNEL DUTIES
AFTER RECEIVING CALL AT MINE SITE**

JOHNNY GREENE, EXECUTIVE DIRECTOR
GENERAL OVERSIGHT OF THE RESCUE OPERATION

COMMAND CENTER
OMSL, MSHA, MINE OPERATOR

FRANK REED
ROTATE TEAMS & KEEP UP WITH WHO IS UNDERGROUND

TRACEY STUMBO & GREG GOINS
DEBRIEF TEAMS & RELAY PERTINENT INFORMATION TO COMMAND CENTER

WEB GEARHEART
LOOK AT ELECTRICAL AND SEE IF POWER DISCONNECTED INBY & MONITOR NEEDS OF FAN AND TRANSPORTATION EQUIPMENT

HAROLD SLONE
STAGING TEAMS;
MAKING SURE TEAMS ARE BRIEFED & READY TO GO

MARVIN COMBS
DRILLING FOR MISSING MINERS

JOHN HIETT
REPORT TO MAP ROOM/
PROVIDE MAPS AND INFORMATION REQUIRED

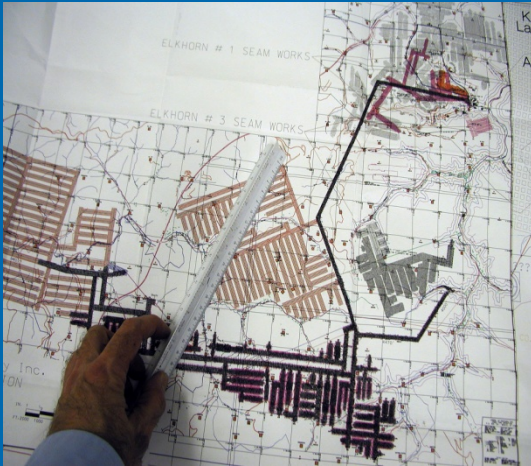
EMERGENCY OPERATIONS CENTER

- A. LODGING FOR TEAMS
- B. PLACING FAMILIES OF VICTIMS NEAR SCENE
- C. AMERICAN RED CROSS—COUNSELING FOR FAMILIES
- D. FEEDING RESCUE WORKERS
- E. LOCATING SUPPLIES & OTHER NEEDS

Mine Mapping Program

Kentucky Office of Mine Safety & Licensing

Coal Mine Map Acquisition, Storage & Archiving



Sisk said the mines department lost its reports including safety records, inspection reports and recommendations and some 30,000 maps, many of them of abandoned mines which could not be replaced. He emphasized the value of the maps

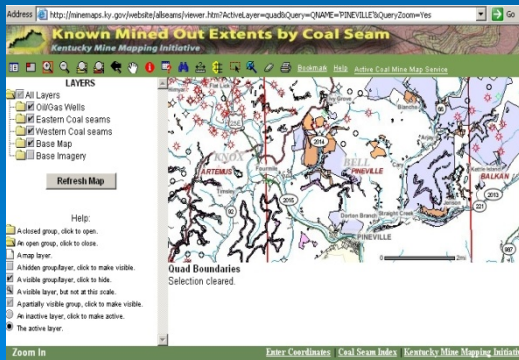


- The agency has collected mine maps and data since it's beginning in 1884.
- Fire destroys the building and 30,000 maps in 1948.
- Currently there are 170,000+ coal mine maps on file spanning 1948-2011, over 1 million sq. ft. of documents. The largest collection of coal mine maps for a single state.
- 185,000+ database records from 1884-2011 have been created to index the maps.

Mine Mapping Program

Kentucky Office of Mine Safety & Licensing

Scanning and Internet Distribution



- Over 50,000 unique mined out areas have been identified.
- The mine maps are scanned, geo-referenced & on the website to download.
- minemaps.ky.gov
- The site has over 600,000 hits a month.

Department of Military Affairs Emergency Communication Systems



Background

- The Department of Military Affairs consist of the Kentucky National Guard and State Emergency Management.
- The J6/CIO is responsible for providing emergency communications for disaster response.
- Our capabilities are to provide voice, data, and video to our first responders as well as the onsite Incident Commander

SYSTEMS

- Department of Military Affairs Radio Communication System (DMARCS)
- National Guard Mobile Command Vehicle (NGMCMV)
- Emergency Management Mobile Command Vehicle (EMMCMV)
- Joint Incident Site Communications Capabilities (JISCC)
- Mobile Communication Tower
- Deployable communications

Department of Military Affairs Radio Communications System



DMARCS Users

State

Department of Military Affairs

- State Emergency Management
- Kentucky National Guard
- WMD 41st CST
- Civil Air Patrol CAP

Fire Marshall Office

Department of Natural Resources

Health Services

County

- EM DIRECTORS
- 14 Regional HAZMAT Response Teams



**KENTUCKY
NATIONAL GUARD**

NGMCMV Equipment Summary

Data and Video

- VSAT
- IP phones and Laptops
- VTC capabilities
- Share server
- Fax capabilities
- Secure phone/fax
- Tower camera
- Air to ground Video
- 4 Sat TV receivers
- 2 DVD recorder/Player
- Video Modulators

Radio

- VHF Quantar Repeater
- 50 portable radios
- ACU 1000 link to 2 VHF, 2 UHF and 2 800MHz mobile radios
- Air to ground radio uhf/vhf
- HF radio PRC 150
- SINCGARS mil radio
- 3 VHF mobile radios for dispatch services
- 800 MHz IP MobileNet

777

17

UP
SINGARS
DOWN

UP
PRC 150
DOWN

Terminal block with 21 channels labeled A-1 through A-21. A-1 through A-10 are in the top row, A-11 through A-20 in the middle row, and A-21 in the bottom right. Below the channels are labels for 'MASE', 'R-3', and 'R-4'. Numerous black cables are plugged into the terminals and are bundled together.

MOTOROLA RPT-1000 radio system. Features two cooling fans on the left, a control panel with various buttons and indicators, and a power section on the right. The Motorola logo is visible at the top left.

APF (Advanced Power Filter) unit with a numeric keypad and several indicator lights. Below it is a control panel with a display screen and various buttons. The APF logo is visible on the left side.

PELCO PRC 150 radio system. Features a row of 15 channels with green indicator lights. The PELCO logo is visible on the left side.

PELCO PRC 150 radio system. Features a row of 15 channels with green indicator lights. The PELCO logo is visible on the left side.

PELCO PRC 150 radio system. Features a row of 15 channels with red indicator lights. The PELCO logo is visible on the left side.

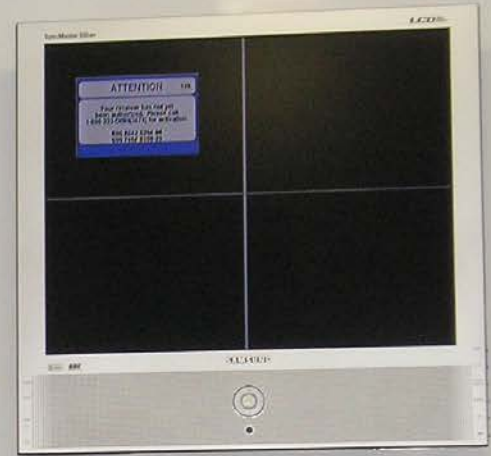
Network switch or patch panel with a dense array of ports. Several blue Ethernet cables are plugged into the ports and are bundled together.

Radio system control panel with a digital display and several buttons. The display shows some text and numbers. The radio system logo is visible at the bottom.

777







Emergency Management Mobile Command Vehicle





**EMERGENCY
MANAGEMENT**

Kentucky
UNBRIDLED SPIRIT

EMMCV Equipment Summary

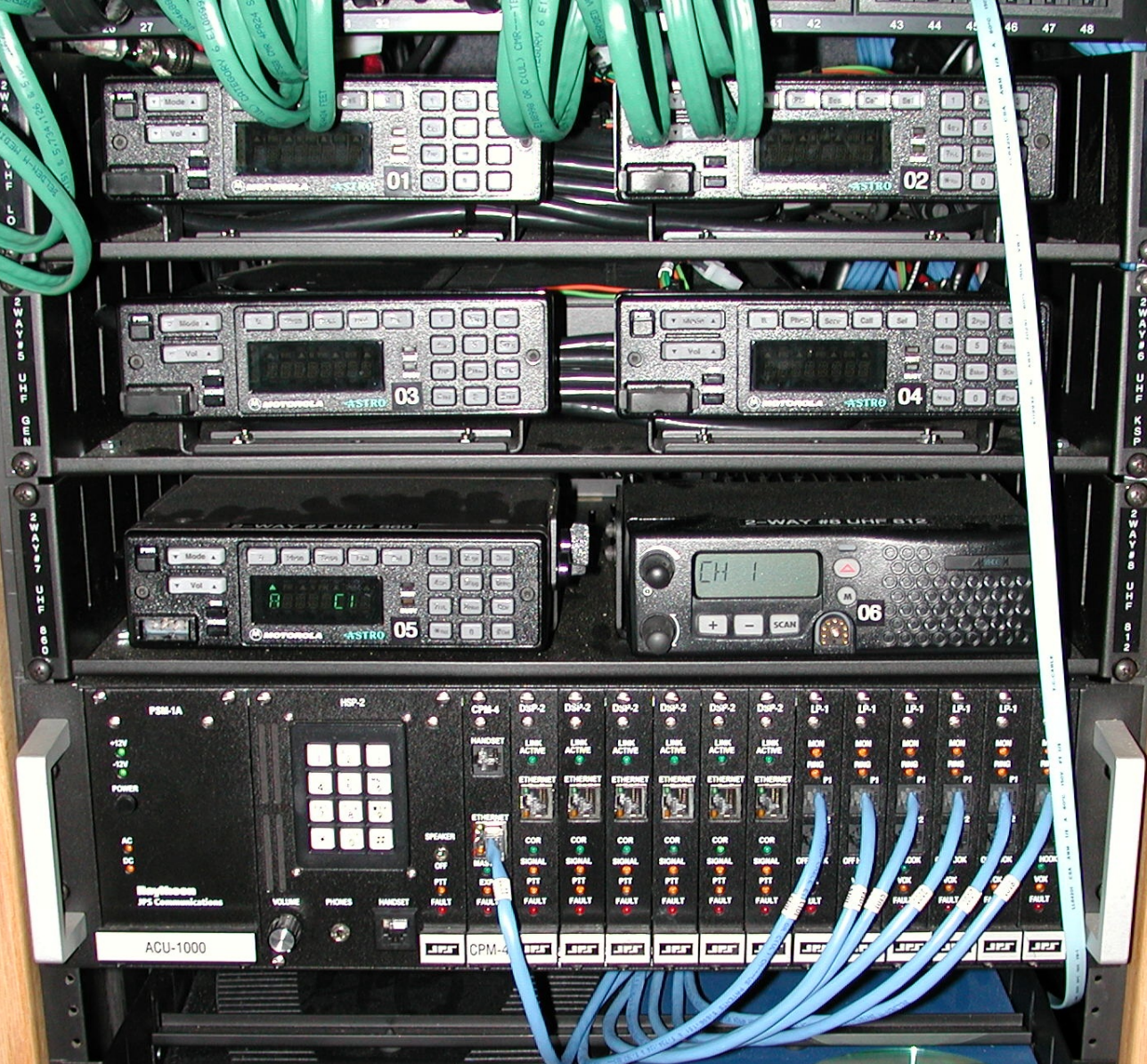
Data and Video

- VSAT
- IP phones and Laptops
- VTC capabilities
- Share server
- Fax capabilities
- Tower camera
- 2 Sat TV receivers
- 1 DVD recorder/Player
- Wireless Access Point
- HF Winlink Data

Radio

- VHF Kenwood Repeater
- 20 VHF portable radios
- 5 UHF portable radio
- 2 800 portable radios
- ACU 1000 link to 2 VHF, 2 UHF and 2 800MHz Mobiles
- Air to ground radio VHF AM
- 2 HF HAM Kenwood TS570
- 3 VHF/UHF HAM Dual Band
- 2 VHF mobiles
- 1 UHF mobile radio
- Sat Radio (Mitubishi)
- 800 MHz IPMobileNet
- CB Radio

TWO VHF, UHF & 2 EACH 800 MHZ RADIOS
ACU1000 BELOW RADIOS



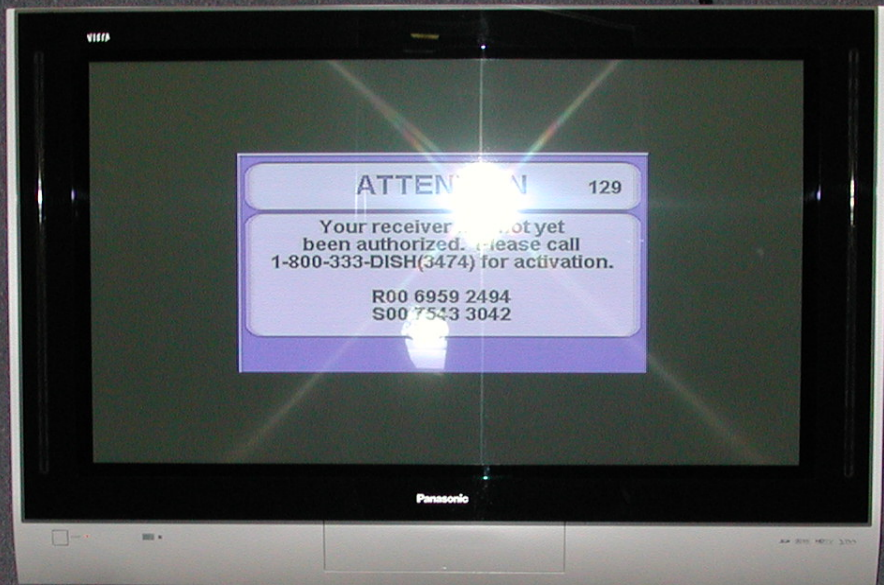
ANTENNA COAX PATCH PANEL & CAMERA TV



**STREETSIDE VHF & UHF RADIOS PLUS WEATHER STATION
ALL WHITE SURFACES ARE DRY ERASE**



DISH NETWORKS TV IN CONFERENCE ROOM



CURBSIDE HAM/MARS OPERATIONS STATIONS



Joint Incident Site Communication Capabilities





Kentucky
UNBROKEN SPIRIT



KENTUCKY
NATIONAL
GUARD

JISCC Equipment Summary

Data and Video

- VSAT
- 25 IP phones
- 15 Laptops
- VTC capabilities
- Share server
- 2 printer/fax/scanners
- 1 Sat TV receiver
- Wireless LAN

Radio

- 1 UHF EF Johnson Repeater
- 25 UHF EF Johnson portable radios
- RIOS link to 2 VHF, 2 UHF and 2 800MHz mobile radios
- Air to ground radio uhf/vhf



Mobile Communication Tower



Mobile Communication Tower

110 ft cable driven mast
1 VHF Quantar Repeater
1 UHF Quantar Repeater
Trailer mounted Shelter
12kw Diesel Generator







Deployable Communication System



Deployable comms

4 VHF Mobile repeaters

1 UHF Mobile Repeater

20 Iridium Satellite phones

15 MSAT terminals (EM)

2 BGAN terminals (JISCC kits)

ACUT and ACU1000

2 ICRI one 5 channel and one 2 channel

2 IMBITR radios 30-512 MHz

LOC equipment (NGB controlled)

300 BK VHF portable radios

3 VHF Repeaters

3 VHF Base stations

100 Iridium Satellite Phones (no service)



KENTUCKY DIVISION OF
EMERGENCY MANAGEMENT

Kentucky Search And Rescue
EMERGENCY MANAGEMENT

EMERGENCY MANAGEMENT
EMERGENCY MANAGEMENT
Kentucky



EM
**EMERGENCY
MANAGEMENT**

Kentucky
UNBROKEN SPIRIT

OMSL Mine Rescue

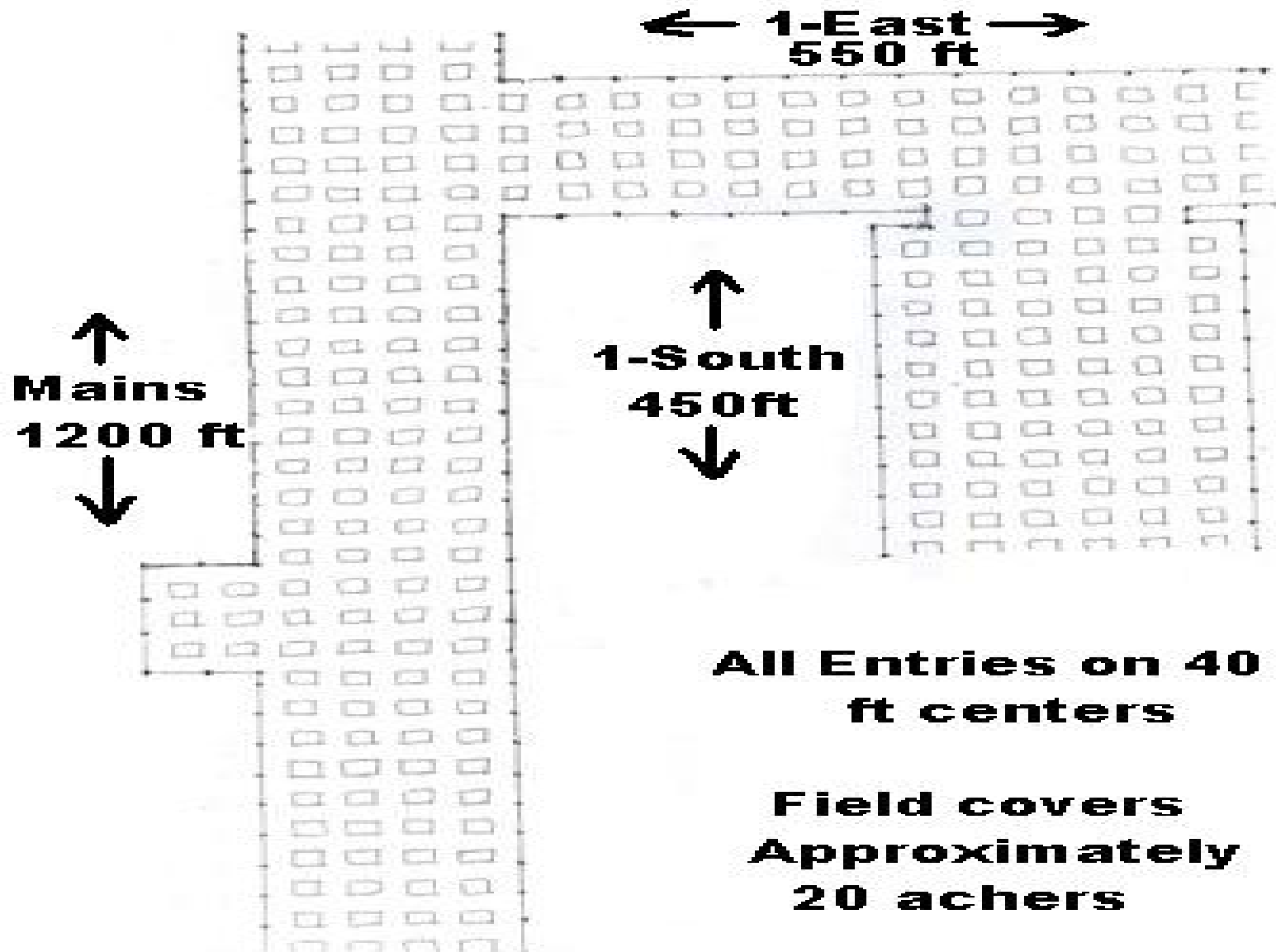


29 12:49 PM

E.P.P.C. CABINET
OFFICE OF MINE SAFETY
AND LICENSING
PIKEVILLE DISTRICT
OFFICE



OMSL Practice Field











M
WEST

RICKY JOHNSON















BRAD THOMAS

EST-KY

EST-KY

Donald East
Office of
Fire Safety & Training

EST-KY

EST-KY

BRAD THOMAS